





Transforming dreams into joy.

“I want to move towards my dreams in my own way.”CENTRO is a high-end kitchen that steadfastly supports all people with this wish.With exceptional craftsmanship and quality, stylish design, and functions giving careful consideration to user needs, CENTRO gives shape to each person’s dreams.Open the door to the next stage with CENTRO.

The core value

Functions and forms are firm and uncompromising.

Monument of technology by going into the heart of requirement in kitchens.

Craftsmanship, latest stainless steel technology, ergonomics.

A whole new level reached by being the manufacturer specialized in kitchens.

A kitchen that makes you want to invite guests and deepen bonds is now available.

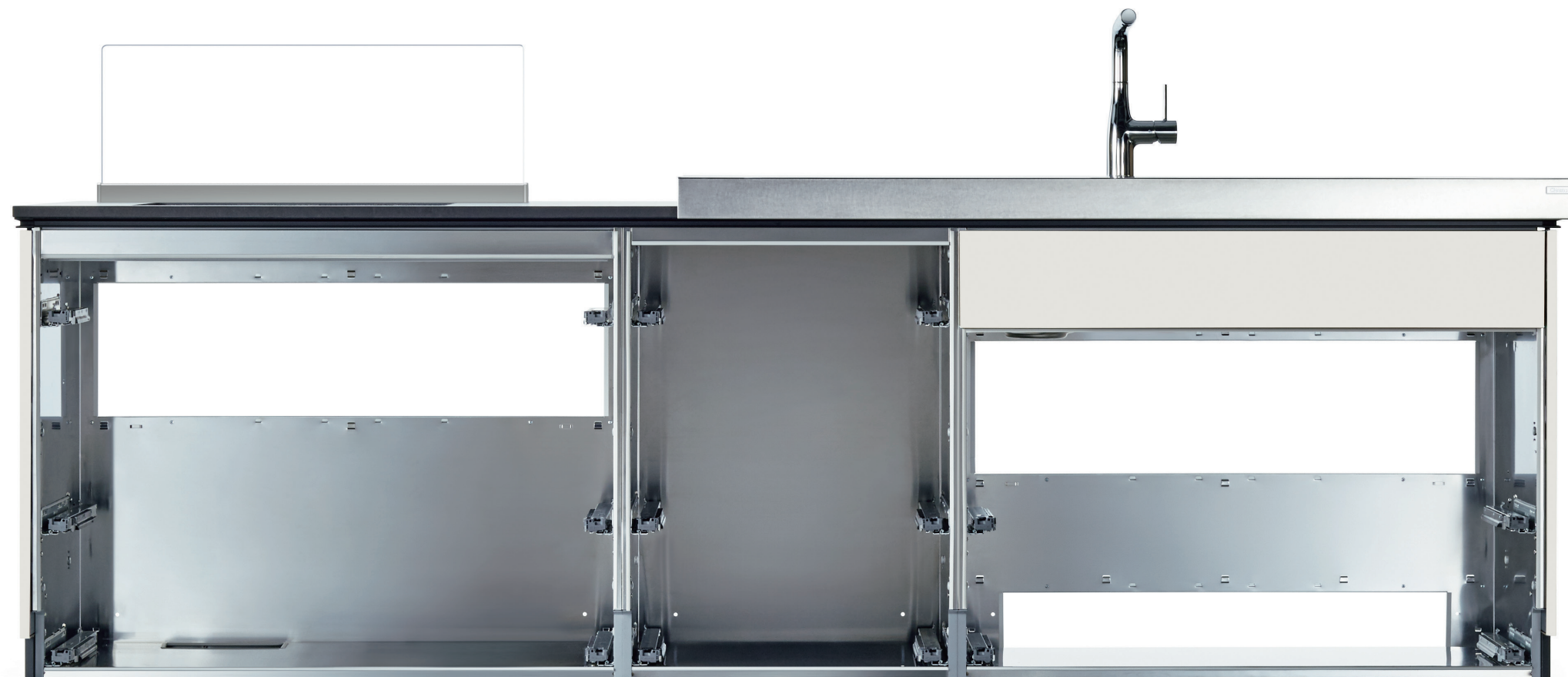
A new chapter of stainless steel systemized kitchen begins.

 **CENTRO**


No.1[※]
STAINLESS
KITCHEN

※ The most sold stainless steel cabinet kitchen.
Based on research by "Marketing Office M・H・F Corporation".
Results from 2014 to 2022.

SYSTEM
KITCHEN  **th**

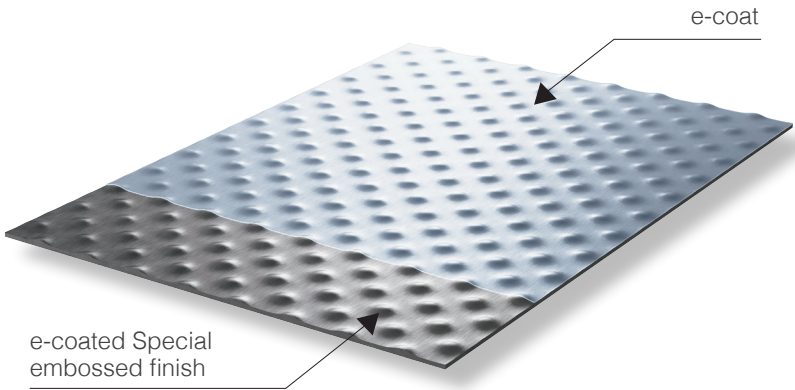






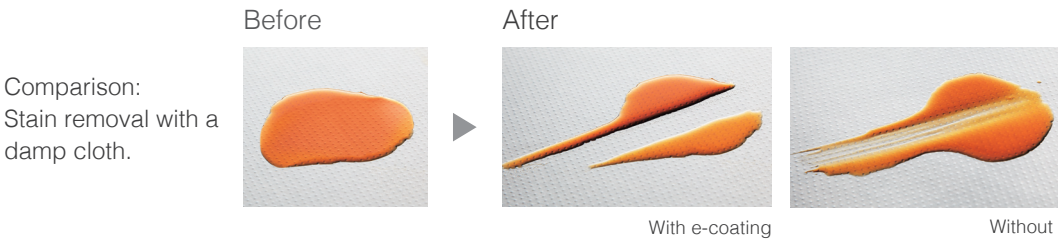
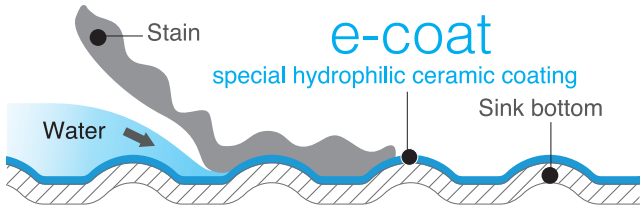
Double guard against scratches and soiling:

Two secrets make the CENTRO series inherently sanitary
— to keep your kitchen in ideal shape, always a grade cleaner —



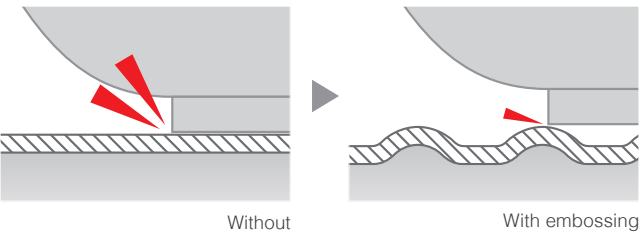
1. Grease stains lift off with e-coat

The e-coat hydrophilic ceramic coating allows water to work its way under the stain, lifting it to float up and off the surface. Even stubborn grease is gone with the wipe of a damp cloth!



2. Scratch-resistant special embossed finish

The work surfaces you use most have a special embossed finish that reduces the effective area of countertop and sink contact with dishes and utensils. Scratches are less likely to form and less noticeable when they do.



Cooking, serving, cleaning will be efficient.

"Center Position Design"

We have reviewed every waste and pursued improvements on efficiency.
We have upgraded every function and storage to create a stress free cooking environment.
With the Center Position Design, an ideal kitchen work is now available.



Drawer rails are
legrabox by blum.

Tool Container for Stove Cabinet



Every type of cooking tools and
ingredients used around the stove
can be stored.



Tool Container for Sink Cabinet



Any kind of tools to wash and
prepare can be stored under the sink.

PLAN 1

Flat-Counter Island
W1860 x D980
Door: 02 class
Couture Mocha (AE2)



PLAN 2

Dual Top Island on wall
W2720 x D980
Door: 02 class
Merletto Bianco (AG7)



PLAN 3

Flat-Counter Island
W2880 x D980
Door: 01 class
Brise-Soleil (AC8 / AC9)



PLAN 4

Flat-Counter Island
W2790 x D980
Door: 03 / 04 class
Rouote Greige (CNG)
Aalto Sorbet (CMF)



PLAN 5

Wall Fitting I-shape
W2730 x D650
Door: 00 class
Kurotobi (AT9)



PLAN 6

Flat-Counter Island
W3090 x D980
Door: 02 class
Couture Medium (AE8)



PLAN 7

Wall Fitting L-shape
W2700 x 1800 x D650
Door: 05 class
Context White (CUT)



PLAN 8

Fixture-type I-shape
W2550 x D650
Door: 06 class
Midnight Gray (CAV)



PLAN 9

Flat-Counter Island on wall
W2880 x D980
Door: 02 class
Luminous Linea (AK6)



PLAN 10

Dual Top Island on wall
W2580 x D980
Door: 05 class
Vein Charcoal (CZZ)



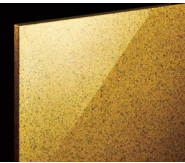
PLAN 11

Wall Fitting I-shape
W2550 x D650
Door: 06 class
Silver (C5G)



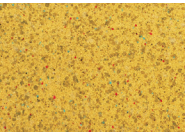
DOOR COLOR | 40 colors

00 class
3 colors

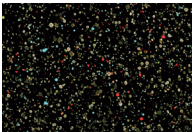


Surface: Polymer enamel sputtering paint "Kyoyuzen Pattern" with crystal ultra violet

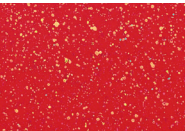
Available Handles:
A4N



Kigaracha (AT1)



Kurotobi (AT9)



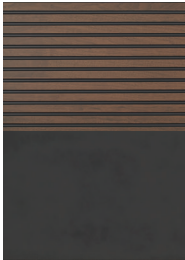
Karabeni (AT2)

01 class
1 color



Surface: Black walnut veneer door with urethane paint finish
Edge: Walnut
Except for the louver portion: Urethanepaint finish [Matte]

Available Handles:
E



Brise-Soleil (AC8 / AC9)

02 class
7 colors

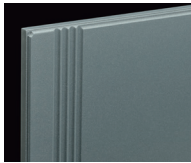


Surface: Mirror-finish clear coated treated stainless steel

Available Handles:
A4N



Luminous Linea (AK6)



Surface: Urethane Clear Coated Framed Door [Matte (Stardust Finishing)]

Available Handles:
23N



Merletto Bianco (AG7)



Luminous Noir (AR9)



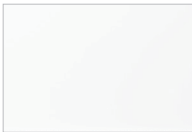
Merletto Blue (AG6)

03 class
8 colors

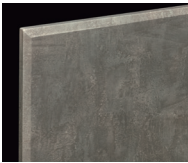


Surface: Vacuum Formed Acrylic Sheet + Crystal UV Coat [High Gloss]

Available Handles:
A4BU23N

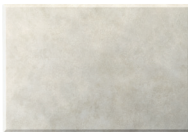


Rouote White (CNA)



Surface: Vacuum Formed Acrylic Sheet + Silk Touch UV Coat [Matte]

Available Handles:
A423N



Chateau Grise (CPG)



Rouote Greige (CNG)



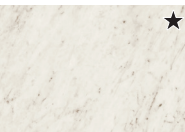
Chateau Sepia (CPZ)

04 class
3 colors

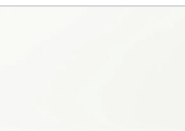


Surface: Olefine Sheet Coated Decorative Panel + Crystal UV Coat [High Gloss]
Edge: UV Coat [High Gloss] on all sides. ABS edge

Available Handles:
A4BU23N



Aalto Sorbet (CMF)



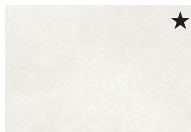
Mono White (CYE)

05 class
8 colors

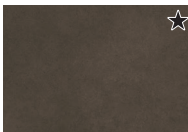


Surface: Olefine Sheet Decorative Panel [Matte]
Edge: Marble pattern on all sides. ABS edge

Available Handles:
A4BU23N



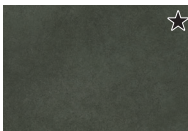
Contex White (CUT)



Contex Brown (CUB)



Contex Beige (CUL)



Contex Dark (CUZ)



Contex Gray (CUG)



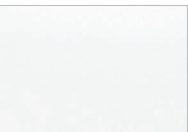
Vein Charcoal (CZZ)

06 class
10 colors

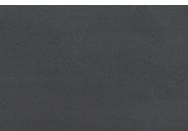


Surface: FF Decorative Panel [Matte]
Edge: Single color on all sides. ABS edge

Available Handles:
A4BU23N



White (CAT)



Charcoal (CAZ)



Surface: FF Decorative Panel [Matte]
Edge: Single color on all sides. ABS edge

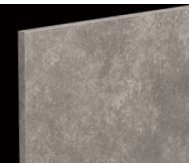
Available Handles:
A4BU23N



Silver (C5G)

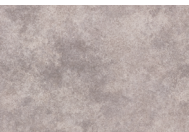


Midnight Gray (CAV)



Surface: FF Decorative Panel [Matte]
Edge: Abstract pattern on all sides. ABS edge

Available Handles:
A4BU23N



Roca Greige (E5K)



Roca Charcoal (E5H)

★ : Door Colors that can be coordinated to create a sense of unity. Pairings of countertops and doors to create a Solid design.

■ List of recommended pairings of countertops and doors to create a Solid design.

Countertops	Ceramic			Sirius (Q)	Keranium (P)	Kreta (V)	Edora (J)	Nilium (R) Entzo (9)	Kelya (1)	Valterra (3)	Bergen (4)
	Hard Artificial Marble			Slate Charcoal (A)		Slate Gray (F)		Slate White (W)			
	Stainless Steel	Stainless Steel color	Vibration Dark (C)								
	02 Class	AK6								AE2	
Door	04 Class										CMF
	05 Class			CUZ	CUB	CUG	CUL	CUT	CZZ	CKK	
	06 Class	C5G	CAV								

COUNTERTOP & SINK

Stream Flow Sink

With the water force during the vegetable washing while cooking or dish washing after meal, garbage in the sink swiftly flows into the drainage.

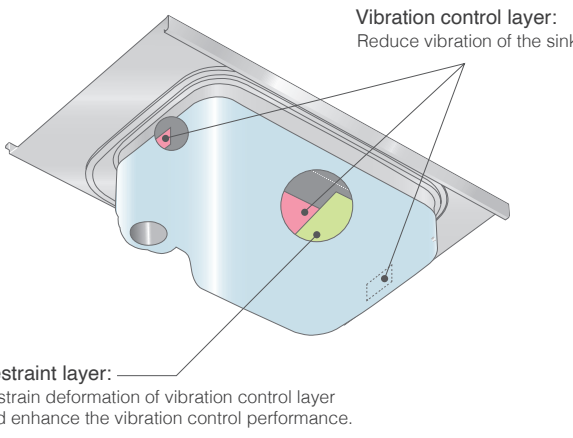


Help keep your sink clean

Water used during cooking will capture garbage and stains and flow towards the stream flow. Garbage flowing into the stream flow will be pushed away with water and into the drainage.

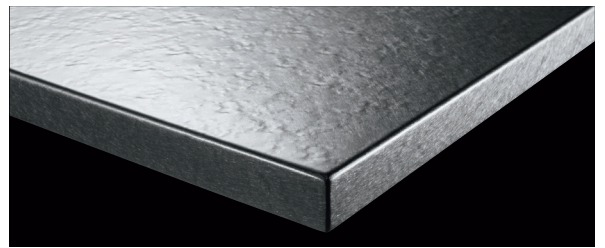


Silent water sound

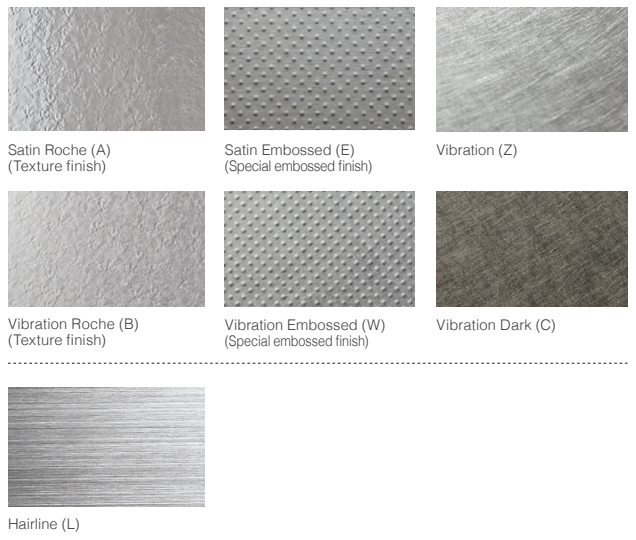


Phone level	70 _{dB}	
In noisy office Regular conversation	60 _{dB}	Conventional Sink
In regular office	50 _{dB}	
In library	40 _{dB}	Stream Flow Sink Super Silent Sink
	35 _{dB}	Silent Shower Faucet
Pendulum of wall clock Whispering	30 _{dB}	

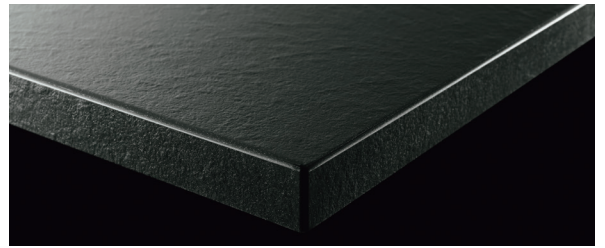
Stainless Steel Countertop



e-coat



Artificial Marble Countertop



Hard Artificial Marble

Slate Series



Solid Series



Natural White (N)

Powder Series



Sucre White (A)



Farina Beige (I)



Russett Mocha (K)

Caliza Series



Caliza White (B)



Caliza Greige (Z)

Ceramic Countertop



Stonica Collection

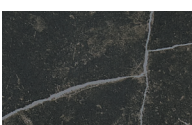


Bergen (4)
(Glossy finish "XGLOSS")

Earth Collection



Entzo (9)

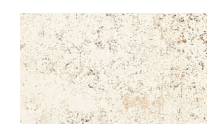


Kelya (1)



Valterra (3)

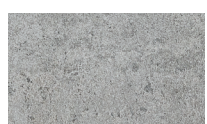
Industrial Collection



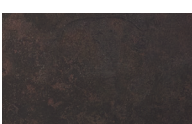
Niliium (R)



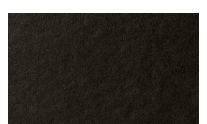
Edora (J)



Kreta (V)



Keranium (P)



Sirius (Q)

COUNTERTOP & SINK

B-STYLE

Stream Flow Square Sink



BF Sink
W75 x D43 x H18.5 cm

Stream Flow Sink



SH Sink
W60 x D52 x H18.5 cm
SC Sink
W75 x D52 x H18.5 cm
BW Sink
W90 x D52 x H18.5 cm

C-STYLE

Craftsman Sink



JX Sink
W75 x D43 x H18.5 cm
JS Sink
W90 x D43 x H18.5 cm

Simple Square Sink



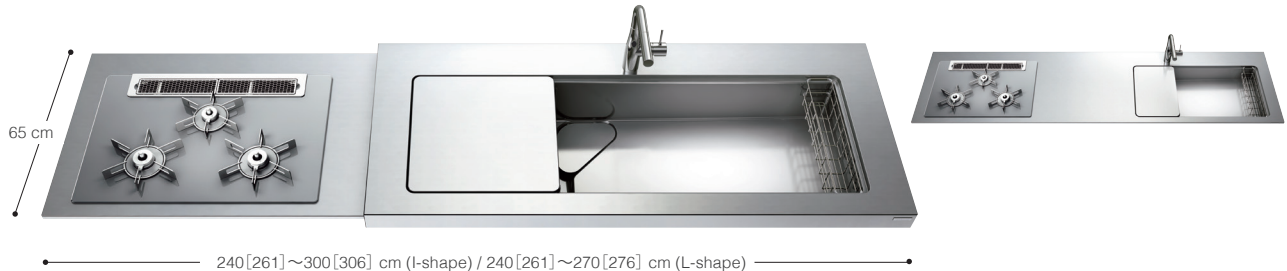
JT Sink
W75 x D43 x H20 cm

I-shape • L-shape Stainless Steel, Artificial Marble, Ceramic



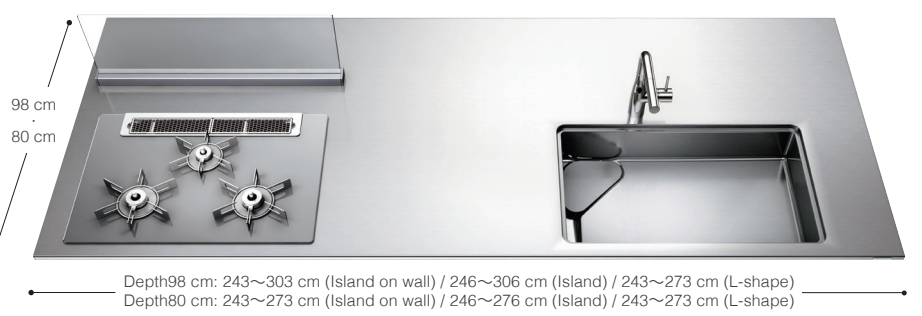
※ The Back Guard is optional and must be installed at the sight when the countertop material is Ceramic, Hard Artificial marble.

I-shape • L-shape Stainless Steel, Artificial Marble, Ceramic



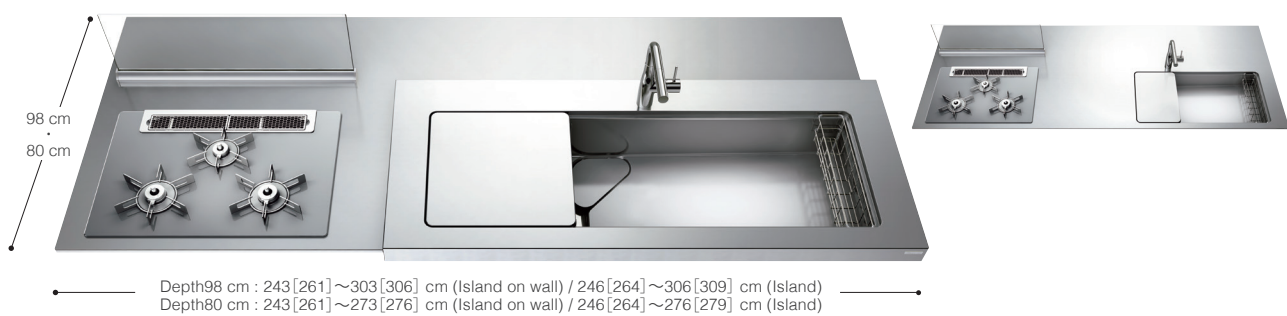
※ There are no Back Guards on the counter.
※ [] are dimensions of JL Sink.

Flat-Counter Island Stainless Steel, Artificial Marble, Ceramic



※ Stainless Steel and Ceramic are not available for Flat Island L-Shaped.

Flat-Counter Island Stainless Steel, Artificial Marble, Ceramic



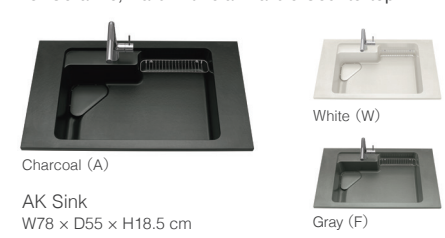
※ [] are dimensions of JL Sink.

Sink Variation

Stream Flow Sink



Hard Artificial Marble
For Ceramic, Hard Artificial Marble Countertop



+ OPTION

For Stream Flow Sink
SH · SC · BW

Support Plate
ZKPPJN-K

Support Plate
※1

Cutting board Rack
ZKPAHN-K

Lid for Drainage
ZKPLNN-K

Draining Basket
ZKPNNN-K

Cutting board Holder
(for Island Countertop)
ZKPBNN-K

Clean Corner
ZKPKNN-K

※1 AE Sink , AK Sink for Hard Artificial Marble Countertop : ZKPPCN-K
AK Sink for Ceramic Countertop : ZKPPPN-K

		I-Shaped · L-Shaped Countertop / Flat-Counter Island			
		Stainless Steel	Artificial Marble	Hard Artificial Marble	Ceramic
Stream Flow Sink	Stainless Steel	●	●	●	●
	Artificial Marble		●		
	Hard Artificial Marble			●	●

Sink Variation

Craftsman Deck Sink



JM Sink With Deck
W75 x D43 x H23.5 cm
(Deck Area : Additional 43.5 cm Width)

+ OPTION

For Square Sink · Craftsman (Deck) Sink
BF · JX · JS · JM · JL · JT

Support Plate
Width: 22.8 cm
ZKPPFN-D

Support Plate
Width: 30.8 cm
ZKPPQN-D

Support Plate
Width: 45.8 cm
ZKPPRN-D

Wooden Plate
Width: 22.3 cm
ZKPYBN-D

Wooden Plate
Width: 30.2 cm
ZKPYAN-D

Clean Rack
ZKPSFN-D

Multi Sink Rack
ZKPSNN-D

Lid for Drainage
ZKPLNN-K

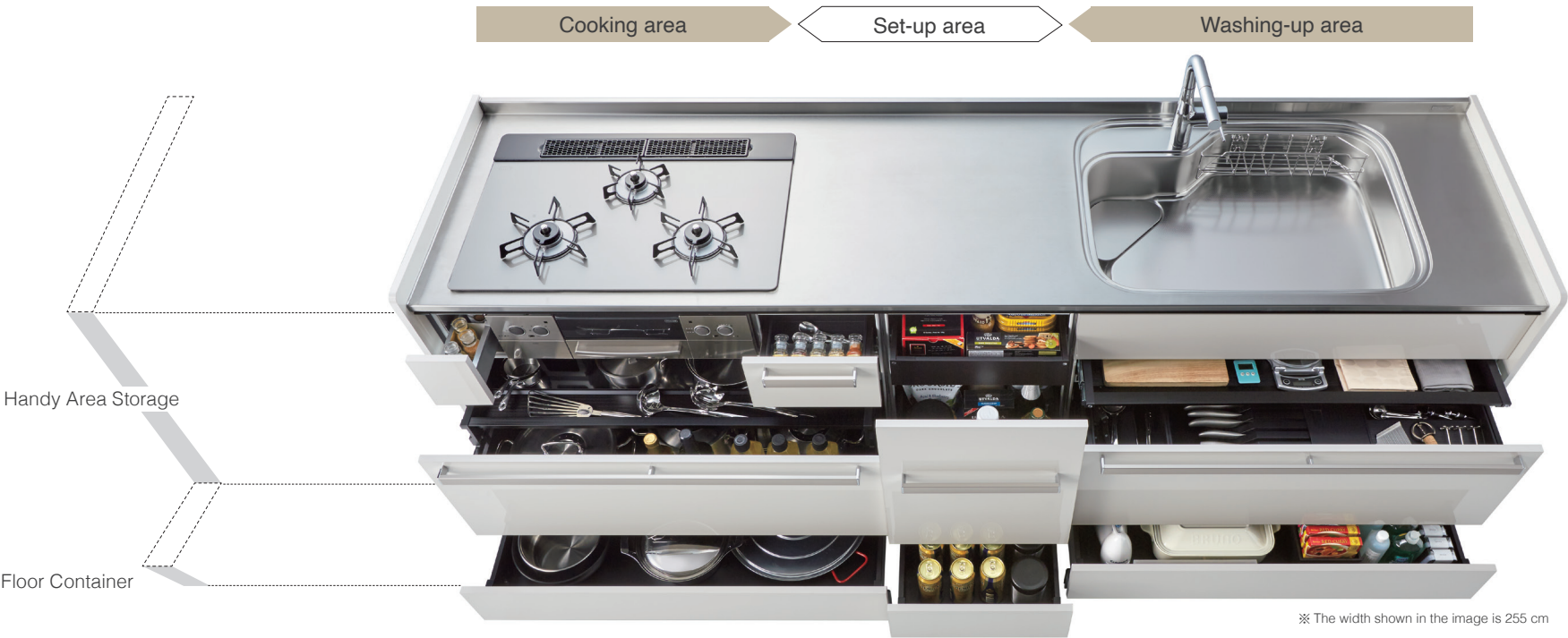
Clean Corner
ZKPKNN-K

Cutting board Holder
ZKPBNN-K

		I-Shaped · L-Shaped Countertop / Flat-Counter Island			
		Stainless Steel	Artificial Marble	Hard Artificial Marble	Ceramic
Craftsman Deck Sink		●	●	●	●
Craftsman Sink	Stainless Steel	●	●	●	●
Simple Square Sink		●	●	●	●

Keep all regularly used items in the Handy Area

Keep all regularly used items in the "Handy Area" and store the non-frequently used items in the "Floor Container". Also, items necessary for different takes like heating, cutting, and washing are stored in different spaces in the kitchen. A comfortable kitchen is realized by reducing unnecessary space and unnecessary movement.



Innovations that make things easy to use and easy to take out

Silent Rail



Full Extension Rail



Floor Container



High Capacity



Moderate clearance from the floor











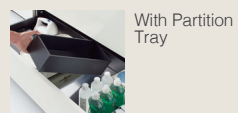
Scratch resistant aluminum riser



Front Side Tray

Handy Area Storage

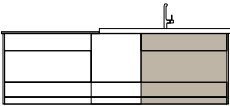
Floor Container

Cooking area	Set-up area	Washing-up area
<p>Stove Cabinet (width 105cm)</p>  <p>Stove-side drawer (Load capacity: 2 kg (small) / 20 kg (large)) ※ Accessory Tray will not be included when there is no Tool Container.</p>  <p>Upper tier drawer (Tool Container) (Load capacity: 40 kg / Including Tool Box)</p>  <p>Floor Container (Load capacity: 20 kg)</p>	 <p>Inner Drawer (Load capacity: 20 kg)</p>  <p>Upper tier drawer ※ Loading capacity depends on the type of the drawer and width.</p>  <p>Floor Container (Load capacity: 20 kg)</p>	<p>Sink Cabinet (width: 105 cm)</p>  <p>Upper tier drawer (Tool Container) (Load capacity: 20 kg / Including Tool Box)</p>  <p>Floor Container (Load capacity: 20 kg)</p>  <p>With Partition Tray ※ Partition Tray will not be included when there is no Tool Container.</p>

FLOOR CABINET

● means with or without piping space is available.
○ means only with piping space is available.
△ means only without piping space is available.
★ stainless steel base plate drawer is optional.

Sink Cabinets

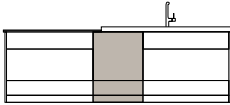


Functions	Inset Panel type with Tool Container	With Tool Container type	Inset Panel type without Tool Contain	Without Tool Container type	Existing Piping type with Tool Container	Existing Piping type without Tool Container
Configuraaion						
Compatible width (cm)	90 · 105	● 75 · 90 · 105	● 90 · 105	● ★ 75 · 90 · 105	● 75 · 90 · 105	△ 75 · 90 · 105

※ Height 90 cm and 85 cm spec are only available for existing piping.
※ Inset Panel is a black decorative panel on the side.

Functions	Disposer-compatible sink cabinet	Swinging door type	Open sink cabinet	Open sink cabinet + W150 knife holder type
Configuraaion				
Compatible width (cm)	75 · 90 · 105	● ★ 90	△ 90 · 105	△ 15

Base Cabinets

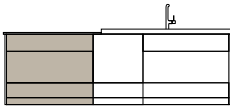


Functions	1 Drawer with Inner Drawer type	1 Drawer type	2 Drawers type	3 Drawers type
Configuraaion				
Compatible width (cm)	30 · 45 · 60 · 75 · 90	● ★ 30 · 45	● ★ 30 · 45 · 60 · 75 · 90	● 30 · 45 · 60

Functions	15 cm width Base Cabinets	
	Wire Basket Type	Bottle Storage Type
Configuraaion		
Compatible width (cm)	15	○ 15

※ With piping space is set back spec.

Stove Cabinets



Functions	Adjustment Board type with Tool Container	With Tool Container type	Adjustment Board type without Tool Container	Without Tool Container type
Configuraaion				
Compatible width (cm)	75 · 90 · 105	● 75 · 90 · 105	△ 75 · 90 · 105	● ★ 60

Corner Cabinet

Cabinet with wagon



- Width: 90 x 90 cm
- Center: Wagon with door panel faced
- Wagon storage comprises two-level trays



Corner wagon



Side tray

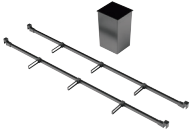
Cabinet with shelves



- Width: 90 x 75 cm · 90 x 90 cm
- With 2 adjustable shelves

Standing Storage

Sink cabinet parallel stabilizer set



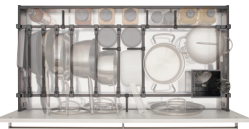
Knife Rack with lock



Stove cabinet parallel stabilizer set



Storage Example
For a wide range of pots and pans



For small-medium sized pots and pans



For medium-large sized pots and pans

+ OPTION

Square Towel Holder for Under Frame



ZKHAB-K

※ Not available for cabinets below.
· Stove Cabinet
· Above drawer and hinged door
· Above dishwasher
· Under Craftsman deck sink (JL, JM Sink)

Towel Rack for Sink Cabinet Drawer



For Line Handle
ZKHTD (N · B) -K



For Short Bar Handle and Handle Less
ZKHCA (N · B) -K

※ N=Silver, B=Black
※ Not available for cabinets below.
· Sink Cabinet (Hinged Door Type)
· Base Cabinet
· Stove Cabinet
※ In case of the towel rack for Short Bar Handle, it is also not available for the cabinet below.
· Width 75 cm Sink Cabinet
· 00 01 02 Class door

Rice Dispenser for Floor Container

Used for Floor Container with width wider than 45 cm, height higher than 85 cm, and depth 65 cm.



ZKCFNN-K

※ Not available for sink cabinet with Servo and base cabinet for deep type dish washer and dryer.

- Capacity: Approx 11 kg
- Including a measuring cup (180 ml)

WALL CABINET

Wall Cabinets

Height 50 cm Short Wall Cabinet, height 60 cm Semi Middle Wall Cabinet, height 70 cm Middle Wall Cabinet, and height 90 cm Long Wall Cabinet are available.



Handle-less Cabinet Doors



Soft Closing Device

Wall cabinet with vertical separator



- Short
 - Width: 75·90 cm
- Semi-middle
 - Width: 75·90 cm
- Middle
 - Width: 75·90·120·135 cm
- Long
 - Width: 75·90 cm



Refrigerator top stand with vertical separator

- Width: 90·120 cm
- Depth: 64 cm
- Height: 50 cm

Design Variation

Cabinet Color Variation



Black



White

Glass Door Variation



Black Glass

- Width: 45·60·75·90 cm ※ Height 90 cm only for width 45 cm.
- Depth: 37.5 cm
- Height: 70·90 cm
- With Soft closing device
- Height 90 cm: With three adjustable shelves
- Height 70 cm: With one adjustable shelf



White Glass

Pull Down Wall Cabinet



Spice rack



- Width: 30·45 cm
- Depth: 37.5 cm
- Height: 70 cm
- With 1 adjustable shelf
- With paper towel rack (Width 45 cm only)

Ladle rack



- Width: 45 cm
- Depth: 37.5 cm
- Height: 70 cm
- With 1 adjustable shelf
- With Ladle hooks

Move Down Wall Cabinet



- Width: 60·75·90 cm
- Depth: 37.5 cm
- Height: 70 cm
- With load adjusting function (Load capacity 15 kg)



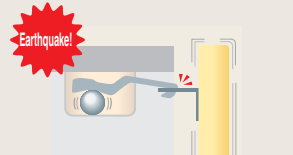
When storing items

+ OPTION

With cabinets fitted with earthquake proof components, have your kitchen earthquake proof!

Wall Cabinet

Detecting shaking from earthquakes etc, doors are automatically locked.



When shaking is detected, the lock cannot be deactivated due to the movement of the ball inside.



The ball inside stabilizes when the shaking stops, so the locked component elevates the lock automatically.

To fill the gap between the ceiling and cabinet.

Ceiling Panel



WALL CABINET

Auto Move

This Wall Cabinet climbs and lowers automatically with the touch of a button to an easy-to-reach height.

Storage made of stainless steel



Stainless Steel Body



With Lighting



Select from 4 types depending on how you would like to use

Water Draining & Storage Type

- Width 75 cm
- Width 90 cm
- Width 120 cm
- Width 135 cm
- Width 150 cm
- Width 165 cm
- Width 180 cm



- Width: 75·90·120·135·150·165·180 cm
- Standard: Cutting Board Rack

Dish Drying Rack Type

- Width 75 cm
- Width 90 cm



- Width: 75·90 cm
- Drying cycle: 30, 60, or 90 min.
- Standard: Cutting Board Rack / Dish Rack / Bowl Drying Rack / Cutlery Rack

Dish Drying Rack & Sterilizer Type

- Width 120 cm
- Width 135 cm



- Width: 120·135 cm
- Dishcloths&cutting board sterilizer: 120 min.
- Drying cycle: 30, 60, or 90 min.
- Standard setting: dish rack / Bowl drying rack / cutlery rack

Water Draining,Storage, & Sterilizer Type

- Width 150 cm
- Width 165 cm
- Width 180 cm



- Width: 150·165·180 cm
- Sanitization cycle for dishcloths and cutting boards:Around 120 minutes.

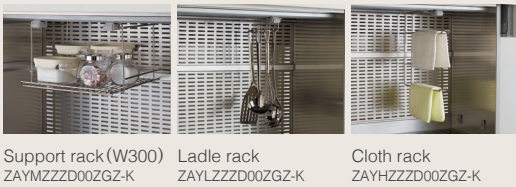
+ OPTION

For Water Draining & Storage Type / Water Draining,Storage, & Sterilizer Type



- Support rack (W500) ZAYNZZZD00ZGZ-K
- Dish rack ZAYDZZZD00ZGZ-K
- Cutlery rack ZAYCZZZD00ZGZ-K
- Paper rack ZAYPZZZD00ZGZ-K

For all Types



- Support rack (W300) ZAYMZZZD00ZGZ-K
- Ladle rack ZAYLZZZD00ZGZ-K
- Cloth rack ZAYHZZZD00ZGZ-K

Hand Move



Select from two types according to use

Storage Type

- Width 75 cm
- Width 90 cm



- Width: 75·90 cm
- Depth: 37.5 cm
- Height: 50·60·70 cm
- With LED lighting (Lighting type only)

Water Draining Type

- Width 75 cm
- Width 90 cm



- Width: 75·90 cm
- Depth: 37.5 cm
- Height: 50·60·70 cm
- With water pan
- With LED lighting (Lighting type only)

+ OPTION

For Storage Type



- Support rack ZKMKNN-K
- Paper rack ZKMJNN-K

For Water Draining Type



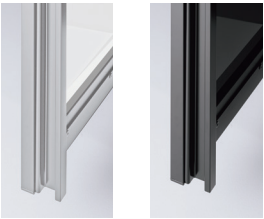
- Dish rack ZKMSNN-K
- Ladle rack ZKMENN-K
- Cutting board rack ZKMMNN-K
- Cutlery rack ZKMCNN-K

Convertible Storage



- Width: 75·90 cm
- Depth: 65 cm
- Height: 216·236 cm

Handle Color Variation



Silver Black

※ Please open the door when using electrical appliances.
Do not close the door while the appliance is still hot.

Upper Cabinet



- Height: 236 cm
With 2 adjustable shelves
- Height: 216 cm
With 1 adjustable shelf

Midsection Cabinet

Microwave Oven Type



※ black glass door only

Counter Type



Counter Variation

[Stainless Steel]



Hairline (L)

[Melamine]



White (I)



Black (K)

Lower Cabinet

Appliance Storage Type



Dark Gray



Black

Sliding shelf fronts



Silver



Black

Open Type



4 Drawers Type



- With Accessory Tray (slim)

Desk Type



- Desk Counter Height: 69.5 cm



Black Glass



White Glass



Door Panel Type

The door can be opened for easy work while cooking and closed for a stylish design in everyday life.



Doors can be stored neatly inside the cabinet



Systemized Area Storage

Counter Type



- Width: 120·135·150·180 cm
- Depth: 45·65 cm
- Height: 216·236 cm
- With Accessory Tray (slim) ※ 3 Drawers type only

Special Silent Spec

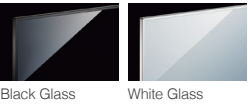


Silent Slider



Silent Rail

Height 236 cm Height 216 cm Depth 45 cm Depth 65 cm



Black Glass

White Glass

Wooden shelf



Glass shelf



Type without Counter enables you to have plenty of storage space



- Width: 90·105·120·135·150·180 cm
- Depth: 45·65 cm
- Height: 216·236 cm
- With Accessory Tray (slim) ※ 3 Drawers type only

Cupboard

Door Panel Type



- Width: 45·60·75·90 cm
- Depth: 45·65 cm
- Height: 216·236 cm



- Height 236 cm: With 2 adjustable shelves
- Height 216 cm: With 1 adjustable shelf



- With 2 adjustable shelves



- With Accessory Tray (slim)



Push Open Type Hinged Doors are also available

Pantry Type



- Width: 45·60·75·90 cm
- Depth: 65 cm
- Height: 216·236 cm



Storage rack behind door

For width 75 cm one side only

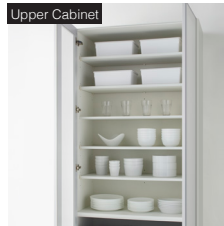


Height 236 cm Height 216 cm Depth 45 cm Depth 65 cm

Glass Door Type



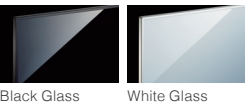
- Width: 45·60·75·90 cm
- Depth: 45·65 cm
- Height: 216·236 cm



- Height 236 cm: With 4 adjustable shelves + one fixed shelf
- Height 216 cm: With 3 adjustable shelves + one fixed shelf



- With Accessory Tray (slim)



Black Glass

White Glass



- Height 236 cm: With 2 adjustable shelves
- Height 216 cm: With 1 adjustable shelf

Shelf Type



- With 4 adjustable shelves

Drawer Type



- With 2 adjustable shelves + 1 fixed shelf + 2 inner drawers
- With Accessory Tray (slim)

Drawer Type



Open Type



Single Sided Floor Counter



Countertop height 85 cm Depth 45 cm Depth 65 cm

Hinged Door (with Inner Drawer) Type



- Width: 30·45·60·75·90 cm
- Depth: 45·65 cm
- Height: 85 cm
- With one adjustable shelf
- Hinged doors are Push Open Type
- With Accessory Tray (slim)

3 Drawer Type



- Width: 30·45·60·75·90 cm
- Depth: 45·65 cm
- Height: 85 cm
- With Accessory Tray (slim)

Open type with 1 Drawer



- Width: 60·75·90 cm
- Depth: 45·65 cm
- Height: 85 cm
- With Accessory Tray (slim)

Open Type



- Width: 60·75·90 cm
- Depth: 45·65 cm
- Height: 85 cm

Wall Appliance Storage

Wall Oven Storage



- Width: 60 cm
- Depth: 65 cm
- Height: 216·236 cm

Height 236 cm Height 216 cm Depth 65 cm



Black Glass



White Glass



Door Panel Type

Cupboard Adjacent to Wall Appliance Storage



- Width: 45·60·75·90 cm
- Depth: 65 cm
- Height: 216·236 cm
- With Accessory Tray (slim)



Door Panel Type

4 Drawers or Hinged Door (With 1 Inner Drawer) are available.



Corner Pantry



Black Glass



White Glass

- Width: 120 cm
- Depth: 45 cm
- Height: 216 • 236 cm

Height 236 cm Height 216 cm Depth 45 cm

Double Sided High Floor Counter



Appliance Storage Type



Hinged DoorType



Countertop height 100 cm Depth 47.5 cm

Living Storage



Black Glass



White Glass



Door Panel Type



Height 50 cm Depth 45 cm Depth 65 cm

Dining Table + Side Cabinet



- Width: 180 cm
- Depth: 80 • 90 cm
- Height: 70 cm

For Kitchen side panel / Table side panel / Dining table Ceramic only ●



Side Cabinet Kitchen Side



Hinged Door (with Inner Drawer) type
● Width: 30 • 45 cm
● Depth: 64 cm



1 Drawer Type
● Width: 30 • 45 cm
● Depth: 64 cm

Side Cabinet Dining Side



Hinged Door (with Inner Drawer) type
● Width: 30 • 45 cm
● Depth: 32 cm
For Table Depth 98 cm



Fixed Door Type
● Width: 30 • 45 cm
● Depth: 14 cm
For Table Depth 80 cm

Link Counter



Counter Variation

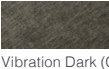
[Stainless Steel]



Hairline (L)



Vibration (Z)



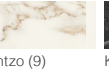
Vibration Dark (C)



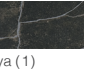
[Ceramic]



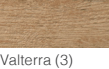
Bergen (4)



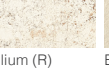
Entzo (9)



Kelya (1)



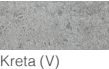
Valterra (3)



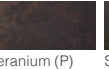
Niliium (R)



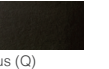
Edora (J)



Kreta (V)



Keranium (P)



Sirius (Q)



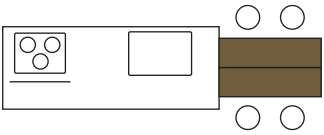
Hairline (L)



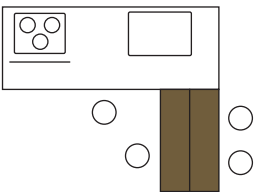
Black (B)

Layout Example

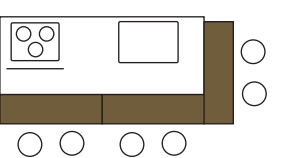
Straight



Standard



Counter



OPTIONAL ACCESSORIES

With Accessory Tray

WideType



ZKH022NL-D

Slim Type



For Drawer / Depth 35 cm
ZKH035DS-D
For Drawer / Depth 45 cm
ZKH045DS-D
For Drawer / Depth 50 cm
ZKH050DS-D
For Drawer / Depth 55 cm
ZKH055DS-D
For Inner Drawer / Depth 45 cm
ZKH045ES-D
For Inner Drawer / Depth 55 cm
ZKH055ES-D

Category		Type	Depth (cm)	Available Trays	
Convertible Storage	Lower cabinet	4 Drawers	65	For Drawer / Depth 45 cm	ZKH045DS-D
Systemized Area Storage	Lower cabinet	3 Inner drawers	45	For Drawer / Depth 35 cm	ZKH035DS-D
			65	For Drawer / Depth 55 cm	ZKH055DS-D
		4 Inner drawers	45	For Drawer / Depth 35 cm	ZKH035DS-D
			65	For Drawer / Depth 55 cm	ZKH055DS-D
Single Sided Cupboard	Lower cabinet	3 Drawers / 4 Drawers / Hinged door	45	For Drawer / Depth 35 cm	ZKH035DS-D
			65	For Drawer / Depth 55 cm	ZKH055DS-D
	Midsection cabinet	Pantry-Type / Drawer type	65	For Drawer / Depth 30 cm	ZKH030DS-D
Single Sided Floor	Lower cabinet	1 Drawer / OPEN with 1 Drawer / 3 Drawers	45	For Drawer / Depth 35 cm	ZKH035DS-D
Single Sided High Floor	Lower cabinet	Hinged door / 4 Drawers / OPEN with 2 Drawer	45	For Drawer / Depth 35 cm	ZKH035DS-D
			65	For Drawer / Depth 55 cm	ZKH055DS-D
		Hinged door for Wall Oven	65	For Inner Drawer / Depth 45 cm	ZKH045ES-D
		appliance storage with Hinged door / Open type appliance storage	65	For Drawer / Depth 50 cm	ZKH050DS-D
Corner Pantry	Lower cabinet	—	—	For Drawer / Depth 50 cm	ZKH050DS-D
Double Sided High Floor	Lower cabinet Midsection cabinet	Hinged door	—	For Drawer / Depth 35 cm	ZKH035DS-D
Base Cabinet	Lower cabinet	1 Drawer (Inner Drawer) without piping space	65	For Inner Drawer / Depth 55cm	ZKH055ES-D
		1 Drawer (Inner Drawer) with piping space	65	For Inner Drawer / Depth 45cm	ZKH045ES-D
		2 Drawers without piping space / 3 Drawers without piping space	65	For Drawer / Depth 55 cm	ZKH055DS-D
		2 Drawers with piping space / 3 Drawers with piping space	65	For Drawer / Depth 45 cm	ZKH045DS-D
Side cabinet: Kitchen side		Hinged door (Inner Drawer)	65	For Inner Drawer / Depth 45 cm	ZKH045ES-D

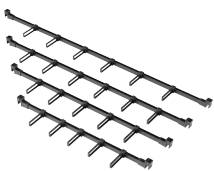
Partition Tray



For Floor Container of Sink Cabinet
ZKH016NM-D

Parallel Stabilizer

Parallel Stabilizer (For Drawer Side Panel)



For cabinet without adjustment board · inset panel
● Width: 60 cm AGNK060NCNN-B
● Width: 75 cm AGNK075NCNN-B
● Width: 90 cm AGNK090NCNN-B
● Width: 105 cm AGNK105NCNN-B

For cabinet with adjustment board · inset panel
● Width: 75 cm AGNK075NCKN-B
● Width: 90 cm AGNK090NCKN-B
● Width: 105 cm AGNK105NCKN-B

Parallel Stabilizer (For Parallel Stabilizer)

AGNK028NDNN-B



Lateral Divider (2Piece)

AGNKNNNNENN-B



Ladle Pocket

AGNK013NFFNN-B



Cleanup Corporation

Production centers

2

locations



Katsuta-gun, Okayama Prefecture

- Okayama Factory 40.000 m²
Systemized Kitchens
- Tsuyama Factory 27.931 m²
Systemized Kitchens, stainless steel counters

8

locations



Iwaki, Fukushima Prefecture

- Yotsukura Factory 140.000 m²
Systemized Kitchens, bathroom vanities
- Kashima System Factory 105.000 m²
Systemized Kitchens
- Kashima Factory 34.000 m²
Modular bathrooms
- Yumoto Factory 33.000 m²
Stainless steel kitchen Countertops
- Crete Factory 32.000 m²
Synthetic marble bathtubs and Countertops
- Crete No.2 Factory 28.000 m²
Synthetic marble kitchen Countertops
- Cleanup Steel Processing Co., Ltd.
Kashima Art Factory 13.200 m²
Stainless steel coloring processes
- Cleanup Steel Processing Co., Ltd.
Noda Factory 11.200 m²
Stainless steel cutting processes

Corporate Data

Head Office	6-22-22 Nishi-nippori, Arakawa-ku, Tokyo 116-8587 Tel: +81-3-3894-4771 (Main switchboard) http://cleanup.jp/
Founded	October 5, 1949
Employees	3,469 (As of March 2022)
Listed on the Tokyo Stock Exchange	September 2, 1991
ISO Certifications	ISO9001 & ISO14001